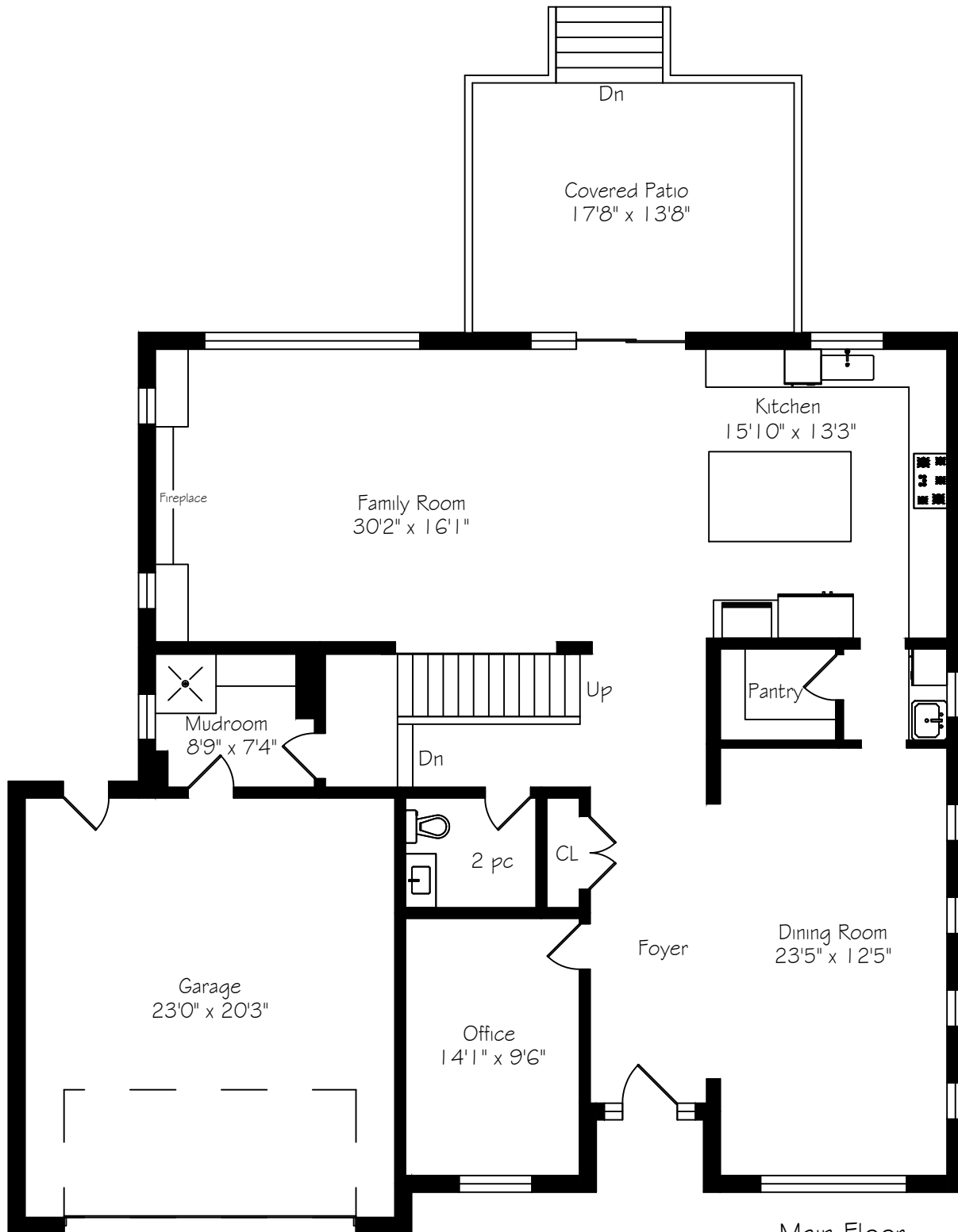
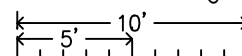


14 Crescent Road

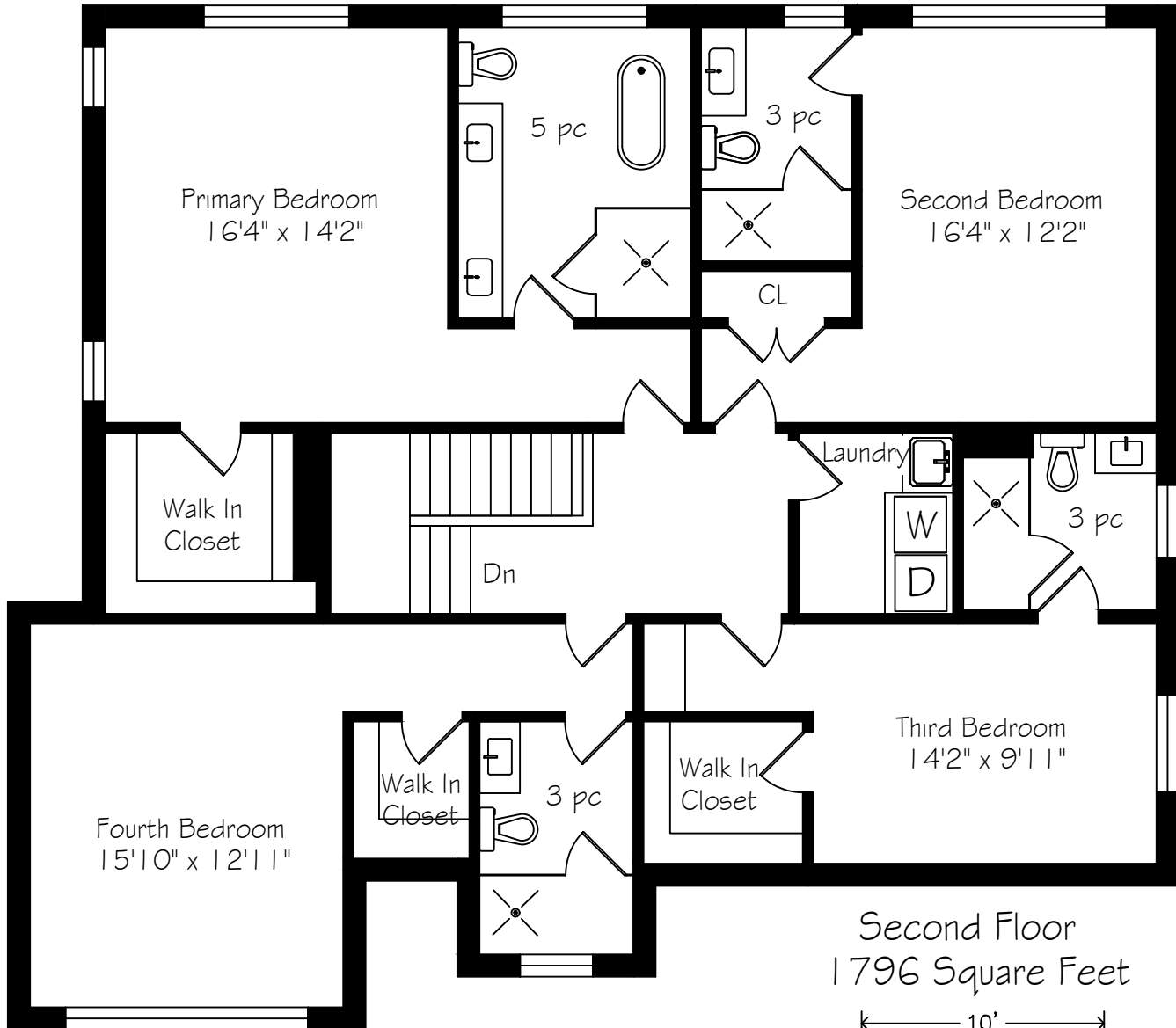


Main Floor
1804 Square Feet
+ 515 Garage



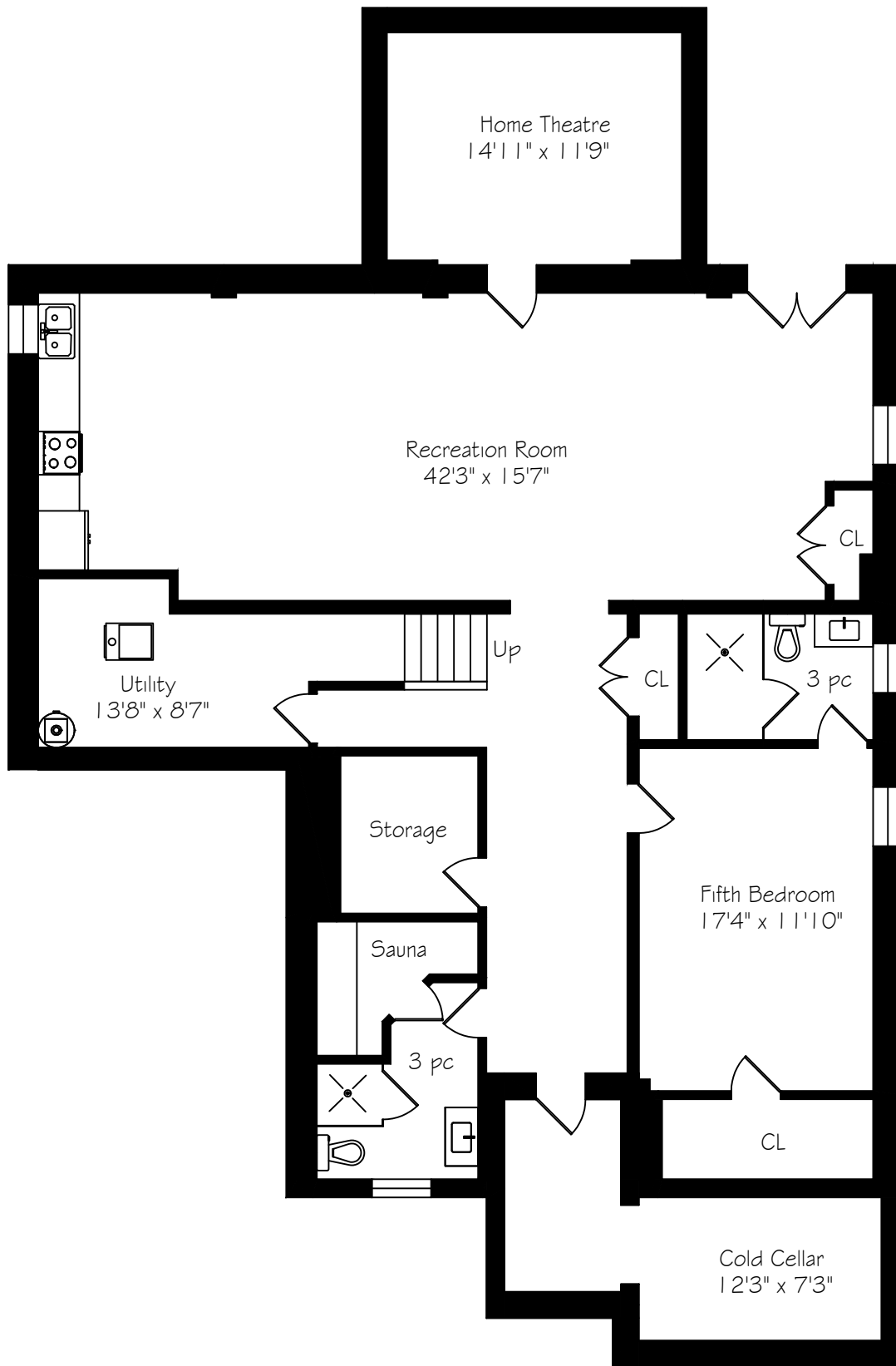
Measurements and Calculations are approximate
To be used as guidelines only
www.measuredup.ca

14 Crescent Road

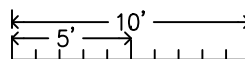


Measurements and Calculations are approximate
To be used as guidelines only
www.measuredup.ca

14 Crescent Road



Lower Level
2219 Square Feet



Measurements and Calculations are approximate
To be used as guidelines only
www.measuredup.ca

To be used as guidelines only

IMPERIAL						METRIC			CH
Main Floor	1804	sf				168 sqm			9'8"-16'11"
Foyer	17'	4"	x	6'	4"	5.28	x	1.93	
Kitchen	15'	10"	x	13'	3"	4.83	x	4.04	
Mudroom	8'	9"	x	7'	4"	2.67	x	2.24	
Family Room	30'	2"	x	16'	1"	9.19	x	4.90	
Dining Room	23'	5"	x	12'	5"	7.14	x	3.78	
Office	14'	1"	x	9'	6"	4.29	x	2.90	
Second Floor	1796	sf				167 sqm			9'0"
Primary Bedroom	16'	4"	x	14'	2"	4.98	x	4.32	
Laundry Room	7'	6"	x	6'	4"	2.29	x	1.93	
Second Bedroom	16'	4"	x	12'	2"	4.98	x	3.71	
Third Bedroom	14'	2"	x	9'	11"	4.32	x	3.02	
Fourth Bedroom	15'	10"	x	12'	11"	4.83	x	3.94	
0.00									
Lower Level	2219	sf				206 sqm			0'0"
Recreation Room	42'	3"	x	15'	7"	12.88	x	4.75	
Fifth Bedroom	17'	4"	x	11'	10"	5.28	x	3.61	
Home Theatre	14'	11"	x	11'	9"	4.55	x	3.58	
Utility Room	13'	8"	x	8'	7"	4.17	x	2.62	
Cold Cellar	12'	3"	x	7'	3"	3.73	x	2.21	
Total Square Footage	5819	sf				541 sqm			
Garage	515	sf				48 sqm			
	23'	0"	x	20'	3"	7.01	x	6.17	
Covered Patio	241	sf				22 sqm			
	17'	8"	x	13'	8"	5.38	x	4.17	
Total Area Measured	6575	sf				611 sqm			September 12, 2025